



The Fontaine

Total living: 2543 s.f.

First floor: 2543 s.f.

Main Floor Ceiling: 9' 0"

Bedrooms: 3

Baths: 3 full, 0 half

Garage: 3 Car

Width: 91'

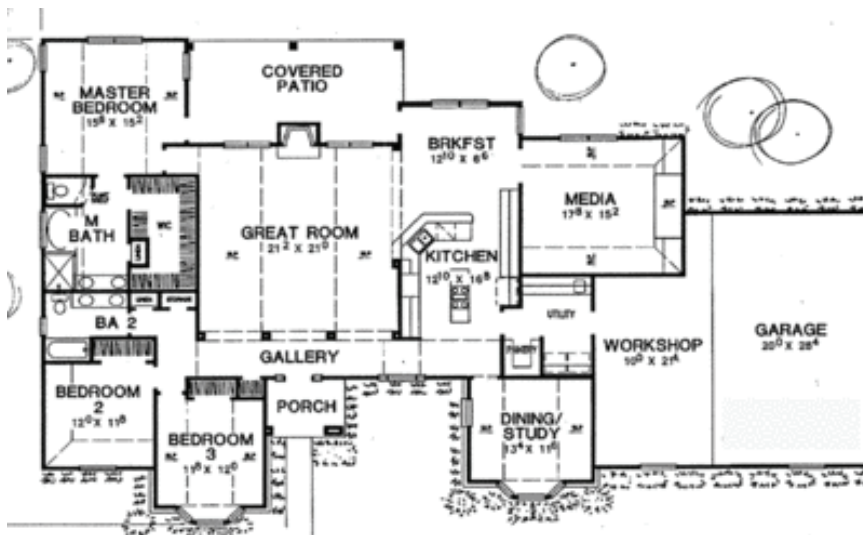
Depth: 56'

Granite Countertops Option

Stainless Appliance Option

1+ Acre Lot

Natural Gas Heat/Water



This elegant single story finally offers buyers a moderately priced home with a media room. Now you can have football parties or just enjoy a good movie with your family in a high-tech home theater. Or, we can build this an extra living room or bedroom.

\$249,000 Base Price

Ruby Estates

HWY 412 & CR 4180

(918) 237-6918

